

Census 2010 Redistricting Monterey County Board of Education Trustee Areas

January 11, 2012

This report provides information on the process of redistricting the Monterey County Board of Education (MCBOE) trustee areas using Census 2010 data. The report covers redistricting principles, explains why the current trustee areas need to be adjusted, discusses the work of the Task Force, and describes the Task Force's recommended plan.

Population growth within the MCBOE's jurisdiction was geographically uneven, so that the populations of the current trustee areas are not balanced. Trustee Area 5 has many more people in it than the other areas, while Trustee Areas 1 and 4 have too few people.

A Task Force was assembled to review redistricting plans developed by the demographer, to make suggestions, and ultimately to make a recommendation to the Board of Education. The Task Force met five times and reviewed five plans. They recommend Scenario 3, which is discussed in detail in Part 2 of this report.

Redistricting Principles and the Current Trustee Areas

What is Redistricting?

In jurisdictions that elect board members by district, redistricting involves the review of the trustee area boundaries after each Census and any necessary adjustment to those boundaries that will balance trustee area populations. This review applies to the election districts for the U.S. House of Representatives, state legislatures, and local political entities (including county offices of education, public school districts, community college districts, city councils, county boards of supervisors, water boards, and other special districts). Moreover, jurisdictions in Monterey County must preclear any changes with the U.S. Department of Justice before the changes take effect.

Legal Requirements

After each decennial census, jurisdictions that elect representatives by trustee area must evaluate the characteristics of the districts and adjust their boundaries as necessary. Three different legal requirements apply:

Population Equality: Trustee areas must be fairly equal in population size. The difference between the largest and smallest district should not exceed 10 percent of the ideal population size of a district.

Federal Voting Rights Act: If trustee area populations are unequal, boundaries must be adjusted in ways that do not violate the Voting Rights Act. In particular, the changes must not be “retrogressive”; to the extent possible, the Act requires jurisdictions to maintain the voting strength of each protected group in each trustee area.¹

Communities of Interest: The Fourteenth Amendment to the U.S. Constitution has been interpreted to prohibit using race as the “predominant” criterion (subordinating other considerations) in drawing or adjusting council boundaries (*Shaw v. Reno*, 1993, and subsequent cases). It does not, however, prohibit all consideration of race in redistricting (*Easley v. Cromartie*, 2001). Bizarrely shaped trustee areas can be evidence that racial considerations predominate. There needs to be a broad focus on communities of interest (including, but not limited to, race).²

California Education Code: Section 1002 states the need for county boards of education to redistrict after the decennial Census and to complete the process by March, 2012. Redistricting may give consideration to: topography; geography; cohesiveness, contiguity, integrity, and compactness of territory; and communities of interest. The trustee areas must be as nearly equal in population as practicable.

Findings Regarding Current Trustee areas

The MCBOE has seven trustee areas. Map 1 (in the separate Appendix) shows the current boundaries of these areas. We translated the trustee areas into Census 2010 geography (Census blocks), and computed each area’s population characteristics.

Population Equality

Census 2010 counted 390,518 people living in the MCBOE jurisdiction, which includes territory in both Monterey and San Benito Counties. One-seventh of the total population of this area would be 55,788, which we call the “ideal” trustee area population. Census 2010 counts for the current trustee areas range from a low of 50,763 (Area 1) to a high of 64,967 (Area 5).

Table 1 shows the Census 2010 population of each Trustee area, its deviation from the ideal trustee area size, and its percentage deviation from the ideal size. For example, District 1 has a Census 2010 population of 50,763, which is 5,025 persons less than the ideal. This represents a deviation of (minus) 9.0 percent from the ideal size. Area 5, with the largest population, has a deviation of 16.5 percent.

Trustee area populations do not need to be exactly equal; the guideline is that a districting plan should not exceed a “10 percent deviation,” which we define below.

¹ See the February 9, 2011, “Guidance Concerning Redistricting Under Section 5 of the Voting Rights Act” Notice by the U.S. Justice Department, <http://federalregister.gov/a/2011-2797>.

² Although not specifically applicable to the jurisdictions of county boards of education, the legislation that created the California Citizens Redistricting Commission (-Section 2(d)(4) of Article XXI of the California Constitution) defines a community of interest as “a contiguous population which shares common social and economic interests that should be included within a single district for purposes of its effective and fair representation.”

There are several ways one can calculate a districting plan's deviation. The first is to measure the difference between the least and most populous trustee areas and divide that number by the ideal district size. For MCBOE, the difference between Areas 1 and 5 (the least and most populous districts) is 14,204. The current plan has a deviation of 25.5 percent (14,204 divided by the ideal population of 55,788).

Another way to calculate a plan's deviation is to sum the absolute values of the percentage deviations of the least and most populous trustee areas. For MCBOE, the least populous trustee area has a deviation of 9.0 percent while the most populous district has a deviation of 16.5 percent. These deviations combine to the total of 25.5 percent. While this deviation is not extremely high, nearly all of the trustee areas need adjustment.

Table 1: Trustee area Census 2010 Populations

Trustee Area	Population	Deviation	Percent Deviation
1	50,763	-5,025	-9.0%
2	54,362	-1,426	-2.6%
3	59,719	3,931	7.0%
4	52,091	-3,697	-6.6%
5	64,967	9,179	16.5%
6	53,077	-2,711	-4.9%
7	55,539	-249	-0.4%
Total	390,518		25.5%
Most populous trustee area	64,967		
Least populous trustee area	50,763		
Difference	14,204		
Ideal Trustee Area Size	55,788 (1/7 of the total population)		
Plan's Percent Deviation	25.5%		

Voting Rights Act

Section 2 of the Federal Voting Rights Act has been interpreted to mean that if there are sufficiently numerous, geographically compact, politically cohesive, protected groups (including Hispanics, Asian Americans, and African Americans) in a jurisdiction, political subdivisions should be drawn (and adjusted) so as to assure that members of these groups could elect representatives of their choice.

Voting power can be measured in several ways. The share of the group in the total population is a poor measure, because only those who are 18 and over and are citizens can vote. Much better

measures to assess minority power and influence are the Voting Age Population (VAP) and the Citizen Voting Age Population (CVAP); the latter population comprises those eligible to vote. Finally, we consider actual voter data, and it is possible to estimate the share of voters who Spanish surnames. Table 2 summarizes these measures for the complete jurisdiction. Hispanics are 55 percent of the total population, 49 percent of the voting age population, an estimated 33 percent of the citizen voting age population (CVAP), an estimated 32 percent of registered voters in 2010, and an estimated 26 percent of actual voters in the 2010 General Election.

Trustee Areas 5 and 7 are clearly Hispanic-majority districts, no matter which measure is used. Trustee Area 4 has an Hispanic majority according to all measures except actual voters in 2010, and even then, the Hispanic share is estimated at 49 percent. While District 3 is 61 percent Hispanic in total population, only an estimated 42 percent of registered voters and 35 percent of actual voters in 2010 were Hispanic.

Table 2: Percent of Trustee Area's Population that was Hispanic/Latino/Spanish Surname

Trustee Area	Total Population	Voting Age Population	Estimated Citizen		
			Voting Age Population	Registered voters 2010	Voters Nov 2010
1	9%	8%	5%	5%	4%
2	23%	20%	17%	14%	11%
3	61%	55%	43%	42%	35%
4	78%	74%	57%	57%	49%
5	83%	80%	64%	65%	62%
6	37%	32%	17%	17%	15%
7	84%	81%	66%	67%	62%
Total	55%	49%	33%	32%	26%

Table 3 presents complete demographic data for the current trustee areas. Several statistics are presented. Shaded rows indicate Hispanic-majority districts.

Table 3

Monterey County Board of Education Current Trustee Areas (2001 boundaries, 2010 data) shading indicates Hispanic/Spanish Surname majority				Percent of Population in Group								
Trustee Area	Population	Deviation from Ideal		Hispanic	NH White	NH Black	NH Indian	NH Asian	NH Hawaiian	NH Other	NH Multiple Race	Total
		Number	Percent									
Total Population (all ages)												
1	50,763	-5,025	-9.0%	9%	82%	1%	1%	6%	0%	0%	0%	100%
2	54,362	-1,426	-2.6%	23%	63%	2%	1%	8%	0%	0%	1%	100%
3	59,719	3,931	7.0%	61%	28%	2%	1%	7%	0%	0%	1%	100%
4	52,091	-3,697	-6.6%	78%	14%	2%	0%	5%	0%	0%	0%	100%
5	64,967	9,179	16.5%	83%	13%	1%	1%	2%	0%	0%	0%	100%
6	53,077	-2,711	-4.9%	37%	34%	8%	1%	15%	2%	0%	2%	100%
7	55,539	-249	-0.4%	84%	7%	1%	0%	6%	0%	0%	0%	100%
Total	390,518	14,204	25%	55%	33%	3%	1%	7%	1%	0%	1%	100%
Ideal district size	55,788											
Most populous trustee area	64,967											
Least populous trustee area	50,763											
% Deviation	25.5%											
Voting Age Population (VAP, aged 18+)				Percent of Voting Age Population in Group								
1	43,448			8%	84%	1%	1%	6%	0%	0%	0%	100%
2	43,082			20%	67%	2%	1%	8%	0%	0%	1%	100%
3	42,398			55%	33%	2%	1%	8%	0%	0%	0%	100%
4	35,835			74%	17%	2%	0%	5%	0%	0%	1%	100%
5	42,901			80%	16%	1%	1%	2%	0%	0%	0%	100%
6	39,322			32%	38%	9%	1%	16%	2%	0%	2%	100%
7	36,704			81%	9%	1%	0%	7%	0%	0%	0%	100%
Total	283,690			49%	39%	3%	1%	7%	1%	0%	1%	100%
Citizen Voting Age Population (CVAP) - estimated from ACS 2005-09 special tabulation and regular data for tracts (note that error margins may be large)				Estimated Percent of CVAP Population in Group								
1	39,788			5%							95%	100%
2	38,192			17%							83%	100%
3	31,995			43%							57%	100%
4	21,005			57%							43%	100%
5	24,538			64%							36%	100%
6	30,363			17%							83%	100%
7	18,333			66%							34%	100%
Total	204,214			33%							67%	100%
Registered Voters 2010 - from Statewide Databases block-level estimates				Estimated Percent of Registered Voters in Group								
1	31,936			5%							95%	
2	30,749			14%							86%	
3	24,889			42%							58%	
4	15,956			57%							43%	
5	18,368			65%							35%	
6	18,984			17%							83%	
7	14,568			67%							33%	
Total	155,450			32%							68%	
Actual Voters 2010 - from Statewide Databases block-level estimates				Estimated Percent of Actual Voters in Group								
1	22,203			4%							96%	
2	19,166			11%							89%	
3	14,127			35%							65%	
4	8,336			49%							51%	
5	9,064			62%							38%	
6	11,000			15%							86%	
7	7,503			62%							38%	
Total	91,399			26%							74%	

Comparison of 2000 and 2010 Populations

As shown in Table 4, the population in MCBOE grew by three percent between the Census 2000 and 2010 enumerations. Population growth was uneven, with some trustee areas losing and others gaining population. Trustee Area 5 grew the most, by 9,340 persons. We believe that much of this growth was associated with housing construction in the Salinas River Valley.

Table 4: Comparison of 2000 and 2010 Populations

Trustee Area	2000 Population	2010 Population	Change	% Change
1	52,750	50,763	-1,987	-4%
2	54,510	54,362	-148	0%
3	53,047	59,719	6,672	13%
4	53,903	52,091	-1,812	-3%
5	55,627	64,967	9,340	17%
6	52,932	53,077	145	0%
7	52,746	55,539	2,793	5%
All areas	375,515	390,518	15,003	4%

During the decade, the Hispanic share of the jurisdiction’s population grew. Between 2000 and 2010, the Hispanic percentage rose from 46 percent to 55 percent. Hispanic shares increased in every trustee area, and especially in Area 3. See Table 5.

Table 5

Comparison of 2000 and 2010 Hispanic Shares			
Trustee Area	2000 Population	2010 Population	Change
1	6.2%	8.7%	2.5%
2	16.7%	23.4%	6.7%
3	45.5%	61.4%	15.9%
4	69.2%	78.3%	9.2%
5	78.0%	83.2%	5.2%
6	29.4%	37.4%	8.0%
7	78.3%	84.4%	6.2%
Total	46.4%	55.2%	8.8%

Scenarios Reviewed, Redistricting Task Force Process, and the Recommended Scenario

Scenarios Reviewed

Task Force members met five times to review redistricting principles and plans provided by the demographers. A total of five plans were considered. The Task Force ultimately chose to recommend Scenario 3. Maps showing Scenario 3 and the others considered by the Task Force are provided in Appendix A.

Scenarios 1 and 2 were preliminary plans, and illustrate the fact that population numbers make it impossible to avoid combining part of Monterey Peninsula Unified School District with part of Salinas or other territory to the east.

Scenarios 3 and 4 were the alternatives considered by the Task Force most comprehensively. Scenario 5 was developed in response to requests by community members, but those people did not attend the Task Force meeting at which the plan was discussed, and the Task Force did not choose to recommend it.

As explained above, Area 5 is the most populous trustee area and needs to be reduced in size. All plans considered by the Task Force have the same configuration for the new Area 5. In all the plans, Area 5's northern boundary is the northern boundary between the Soledad and Gonzales Unified School Districts, with all of Soledad Unified in Area 5 and all of Gonzales Unified outside of Area 5. This configuration permits Area 5's population to be within the allowable deviation, at 53,698, or minus 3.7 percent of the ideal trustee area size.

A key issue and a troublesome aspect of the redistricting process was what to do with the former northern portion of Area 5 containing Gonzales Unified, Chualar Elementary, and part of Alisal Elementary. This area contains 11,269 persons. The treatment of this area was as follows:

- Scenario 1: the area is in Trustee Area 4, along with parts of Salinas
- Scenario 2: the area is in Trustee Area 4, along with (different) parts of Salinas
- Scenario 3: the area is in Trustee Area 2 (Washington Union/Spreckels Union/part of MPUSD), along with part of south Salinas and some of Monterey
- Scenario 4: the area is in Trustee Area 3 (north county) along with part of Salinas
- Scenario 5: the area is in Trustee Area 2 (Washington Union/Spreckels Union/part of MPUSD). Scenario 5 is similar to Scenario 3; the only difference is that Montebella is shifted from Area 7 to Area 4, while Area 7 includes more of north Salinas.

In Scenario 3, the plan recommended by the Task Force, this area is combined with Washington Union, Spreckels Union, and parts of Monterey Peninsula Unified. The Task Force did not believe this was a good fit from a community of interest perspective, but felt it was better than the Scenario 4 configuration. Furthermore, Area 2 needed additional population, and this was one way to achieve that requirement.

The Task Force recommended plan is described in detail below, followed by maps of the plan and two data tables that provide statistics for all five plans and the current plan. Maps of all the other plans considered by the Task Force are provided in the separate Appendix.

ITEM 3.5

Presentation of Scenario 3 as Recommended by the Task Force

The objective of Scenario 3 was to make as few changes as possible to many of the current trustee areas in order to bring the plan into legal compliance. While this was possible for many of the trustee areas, this was not the case for Area 2, which greatly expanded its territory to include the surplus population of Area 5. Changes to each trustee area are described below.

Area 1 adds population from Area 2, so that the boundary between Area 1 and Area 2 is Highway 1 and Munras Avenue.

Area 2 loses population to Area 1 and Area 4, and gains the excess population of Area 5 (Gonzales Unified, Chualar Union, and parts of Alisal Union).

Area 3 loses its area in the Alisal Union School District, and the boundary between Areas 3 and 2 is the Alisal Union/Santa Rita Union School District boundary.

Area 4 adds population from Area 2 in central Salinas bounded by West Alisal – Main Street – John Street (Hwy 68) – Abbott Street. This area contains 1,869 persons.

Area 5 needs to lose population. Its boundary is the Soledad Unified-Gonzales Unified School District line.

Area 6 remains unchanged. Although it could use more population, being at the legal limit of deviation, members of the Task Force did not want to dilute the African-American influence, which adding population would do.

Area 7 adds the Montebella development to Area 7. This area was home to 2,349 persons in 2010.

Appendix A

Maps and Demographic Data

for All Considered Plans

Table 6: Comparison of Current Plan and Scenarios 1-5

Monterey County Board of Education - Trustee Area Plan Comparison												
Current Trustee Areas (2001 boundaries, 2010 data)				VAP = Voting Age Population (aged 18+)				CVAP = Citizen Voting Age Population				
Scenario 1 7/13/11				Scenario 3 8/18/11				Scenario 5 8/30/11				
Scenario 2 8/16/11				Scenario 4 8/19/11								
Percent of trustee area's population that was												
Scenario	Trustee Area	Population	Deviation	Hispanic/Latino			Spanish Surname				Other protected groups	
				All ages	Voting Age Population	Estimated Citizen Voting Age Population	Registered Voters 2008	Actual Voters 2008	Registered Voters 2010	Actual Voters 2010	African American VAP	Asian VAP
Current Trustee Areas (2001 boundaries, 2010 data)												
	1	50,763	-9.0%	9%	8%	5%	4.7%	4.5%	4.8%	4.2%	1.3%	5.7%
	2	54,362	-2.6%	23%	20%	17%	13.2%	11.9%	13.6%	10.7%	2.3%	8.4%
	3	59,719	7.0%	61%	55%	43%	40.1%	37.2%	41.4%	34.2%	1.9%	7.6%
	4	52,091	-6.6%	78%	74%	57%	55.4%	51.7%	56.9%	49.4%	1.8%	5.4%
	5	64,967	16.5%	83%	80%	64%	63.5%	59.5%	64.9%	58.0%	1.0%	2.1%
	6	53,077	-4.9%	37%	32%	17%	16.4%	15.2%	17.0%	14.5%	8.8%	16.3%
	7	55,539	-0.4%	84%	81%	66%	65.5%	63.2%	66.8%	61.5%	1.4%	7.0%
	All areas	390,518	25.5%	55%	49%	33%	30.8%	27.2%	32.1%	25.5%	2.6%	7.4%
Scenario 1 7/13/11												
	1	57,484	3.0%	9%	8%	6%	4.7%	4.5%	4.8%	4.2%	1.4%	6.1%
	2	54,821	-1.7%	31%	27%	22%	17.7%	15.9%	18.4%	14.1%	2.4%	7.9%
	3	54,656	-2.0%	61%	55%	42%	39.2%	36.2%	40.6%	33.3%	1.7%	7.6%
	4	57,148	2.4%	84%	80%	64%	63.4%	59.9%	64.6%	58.0%	1.2%	4.4%
	5	53,698	-3.7%	83%	79%	62%	61.7%	57.7%	63.2%	56.4%	1.1%	2.0%
	6	56,043	0.5%	37%	32%	17%	16.2%	15.0%	16.8%	14.3%	8.6%	15.9%
	7	56,668	1.6%	83%	79%	64%	63.8%	61.4%	65.1%	59.7%	1.7%	7.4%
	All areas	390,518	6.8%	55%	49%	33%	30.8%	27.2%	32.1%	25.5%	2.6%	7.4%
Scenario 2 8/16/11												
	1	57,484	3.0%	9%	8%	6%	4.7%	4.5%	4.8%	4.2%	1.4%	6.1%
	2	55,584	-0.4%	34%	29%	23%	18.9%	16.9%	19.7%	15.2%	2.2%	8.2%
	3	56,908	2.0%	61%	55%	42%	38.9%	35.7%	40.4%	33.0%	1.8%	6.7%
	4	53,479	-4.1%	87%	84%	68%	69.2%	65.9%	70.2%	64.0%	0.9%	4.4%
	5	53,698	-3.7%	83%	79%	62%	61.7%	57.7%	63.2%	56.4%	1.1%	2.0%
	6	58,550	5.0%	36%	31%	17%	16.1%	14.9%	16.5%	14.0%	8.6%	15.6%
	7	54,815	-1.7%	81%	77%	63%	61.9%	59.7%	63.2%	57.8%	1.8%	7.6%
	All areas	390,518	9.1%	55%	49%	33%	30.8%	27.2%	32.1%	25.5%	2.6%	7.4%
Scenario 3 8/18/11												
	1	57,466	3.0%	9%	8%	6%	4.7%	4.5%	4.8%	4.2%	1.4%	6.1%
	2	57,768	3.5%	36%	31%	24%	21.1%	18.4%	21.8%	16.6%	2.0%	7.4%
	3	56,661	1.6%	60%	54%	43%	39.0%	36.1%	40.4%	33.3%	1.9%	7.5%
	4	53,960	-3.3%	79%	74%	57%	55.6%	51.9%	57.1%	49.8%	1.8%	5.4%
	5	53,698	-3.7%	83%	79%	62%	61.7%	57.7%	63.2%	56.4%	1.1%	2.0%
	6	53,077	-4.9%	37%	32%	17%	16.4%	15.2%	17.0%	14.5%	8.8%	16.3%
	7	57,888	3.8%	84%	81%	66%	65.8%	63.6%	67.1%	61.8%	1.4%	7.2%
	All areas	390,518	8.6%	55%	49%	33%	30.8%	27.2%	32.1%	25.5%	2.6%	7.4%
Scenario 4 8/19/11												
	1	57,466	3.0%	9%	8%	6%	4.7%	4.5%	4.8%	4.2%	1.4%	6.1%
	2	57,428	2.9%	32%	28%	23%	18.8%	16.8%	19.4%	15.1%	2.5%	9.1%
	3	57,001	2.2%	64%	58%	45%	42.1%	38.6%	43.5%	35.9%	1.4%	5.6%
	4	53,960	-3.3%	79%	74%	57%	55.6%	51.9%	57.1%	49.8%	1.8%	5.4%
	5	53,698	-3.7%	83%	79%	62%	61.7%	57.7%	63.2%	56.4%	1.1%	2.0%
	6	53,077	-4.9%	37%	32%	17%	16.4%	15.2%	17.0%	14.5%	8.8%	16.3%
	7	57,888	3.8%	84%	81%	66%	65.8%	63.6%	67.1%	61.8%	1.4%	7.2%
	All areas	390,518	8.6%	55%	49%	33%	30.8%	27.2%	32.1%	25.5%	2.6%	7.4%
Scenario 5 8/30/11												
	1	57,466	3.0%	9%	8%	6%	4.7%	4.5%	4.8%	4.2%	1.4%	6.1%
	2	57,768	3.5%	36%	31%	24%	21.1%	18.4%	21.8%	15.1%	2.0%	7.4%
	3	56,944	2.1%	61%	55%	42%	38.8%	35.9%	40.2%	35.9%	1.8%	6.9%
	4	53,868	-3.4%	80%	76%	58%	58.1%	54.5%	59.7%	49.8%	1.7%	5.4%
	5	53,698	-3.7%	83%	79%	62%	61.7%	57.7%	63.2%	56.4%	1.1%	2.0%
	6	53,077	-4.9%	37%	32%	17%	16.4%	15.2%	17.0%	14.5%	8.8%	16.3%
	7	57,697	3.4%	83%	79%	65%	63.9%	61.5%	65.0%	61.8%	1.6%	7.8%
	All areas	390,518	8.4%	55%	49%	33%	30.8%	27.2%	32.1%	25.5%	2.6%	7.4%

Table 7: Differences between Current Plan and Scenarios 1-5

Differences between current plan and draft scenarios (retrogression analysis)												
				Percent of trustee area's population that was								
				Hispanic/Latino		Spanish Surname		Other protected groups				
Scenarios	Trustee Area	Population	Deviation	All ages	Voting Age Population	Estimated Citizen Voting Age Population	Registered Voters 2008	Actual Voters Nov 2008	Registered Voters 2010	Actual Voters Nov 2010	African American VAP	Asian VAP
Current Trustee Areas (2001 boundaries, 2010 data) & Scenario 1 7/13/11												
	1	6,721		0%	0%	0%	0.1%	0.0%	0.1%	0.0%	0.0%	0.4%
	2	459		8%	7%	5%	4.5%	3.9%	4.8%	3.4%	0.1%	-0.5%
	3	-5,063		0%	0%	0%	-0.8%	-1.0%	-0.9%	-0.9%	-0.1%	0.0%
	4	5,057		5%	6%	7%	8.0%	8.2%	7.7%	8.6%	-0.6%	-1.0%
	5	-11,269		-1%	-1%	-2%	-1.9%	-1.8%	-1.7%	-1.6%	0.1%	-0.1%
	6	2,966		0%	0%	0%	-0.2%	-0.2%	-0.2%	-0.2%	-0.3%	-0.4%
	7	1,129		-2%	-2%	-3%	-1.7%	-1.7%	-1.7%	-1.8%	0.3%	0.4%
Current Trustee Areas (2001 boundaries, 2010 data) & Scenario 2 8/16/11												
	1	6,721		0%	0%	0%	0.1%	0.0%	0.1%	0.0%	0.0%	0.4%
	2	1,222		10%	9%	6%	5.7%	5.0%	6.2%	4.5%	-0.1%	-0.2%
	3	-2,811		0%	0%	-1%	-1.2%	-1.5%	-1.1%	-1.2%	-0.1%	-0.9%
	4	1,388		8%	10%	11%	13.9%	14.2%	13.3%	14.5%	-0.9%	-1.0%
	5	-11,269		-1%	-1%	-2%	-1.9%	-1.8%	-1.7%	-1.6%	0.1%	-0.1%
	6	5,473		-1%	-1%	0%	-0.3%	-0.3%	-0.5%	-0.5%	-0.3%	-0.6%
	7	-724		-3%	-4%	-3%	-3.6%	-3.5%	-3.6%	-3.6%	0.4%	0.6%
Current Trustee Areas (2001 boundaries, 2010 data) & Scenario 3 8/18/11												
	1	6,703		0%	0%	0%	0.0%	0.0%	0.0%	0.0%	0.0%	0.4%
	2	3,406		12%	11%	7%	7.9%	6.5%	8.2%	5.9%	-0.3%	-1.0%
	3	-3,058		-1%	-1%	0%	-1.0%	-1.1%	-1.1%	-0.9%	0.0%	-0.1%
	4	1,869		0%	0%	0%	0.2%	0.2%	0.2%	0.4%	0.1%	0.0%
	5	-11,269		-1%	-1%	-2%	-1.9%	-1.8%	-1.7%	-1.6%	0.1%	-0.1%
	6	0		0%	0%	0%	0.0%	0.0%	0.0%	0.0%	0.0%	0.0%
	7	2,349		0%	0%	0%	0.3%	0.5%	0.3%	0.4%	0.0%	0.2%
Current Trustee Areas (2001 boundaries, 2010 data) & Scenario 4 8/19/11												
	1	6,703		0%	0%	0%	0.0%	0.0%	0.0%	0.0%	0.0%	0.4%
	2	3,066		9%	8%	6%	5.6%	4.8%	5.9%	4.4%	0.1%	0.7%
	3	-2,718		2%	3%	2%	2.1%	1.5%	2.1%	1.6%	-0.4%	-2.0%
	4	1,869		0%	0%	0%	0.2%	0.2%	0.2%	0.4%	0.1%	0.0%
	5	-11,269		-1%	-1%	-2%	-1.9%	-1.8%	-1.7%	-1.6%	0.1%	-0.1%
	6	0		0%	0%	0%	0.0%	0.0%	0.0%	0.0%	0.0%	0.0%
	7	2,349		0%	0%	0%	0.3%	0.5%	0.3%	0.4%	0.0%	0.2%
Current Trustee Areas (2001 boundaries, 2010 data) & Scenario 5 8/30/11												
	1	6,703		0%	0%	0%	0.0%	0.0%	0.0%	0.0%	0.0%	0.4%
	2	3,406		12%	11%	7%	7.9%	6.5%	8.2%	4.4%	-0.3%	-1.0%
	3	-2,775		-1%	-1%	-1%	-1.2%	-1.2%	-1.3%	1.6%	0.0%	-0.7%
	4	1,777		2%	2%	1%	2.7%	2.8%	2.8%	0.4%	0.0%	0.0%
	5	-11,269		-1%	-1%	-2%	-1.9%	-1.8%	-1.7%	-1.6%	0.1%	-0.1%
	6	0		0%	0%	0%	0.0%	0.0%	0.0%	0.0%	0.0%	0.0%
	7	2,158		-2%	-2%	-1%	-1.7%	-1.7%	-1.8%	0.4%	0.2%	0.8%

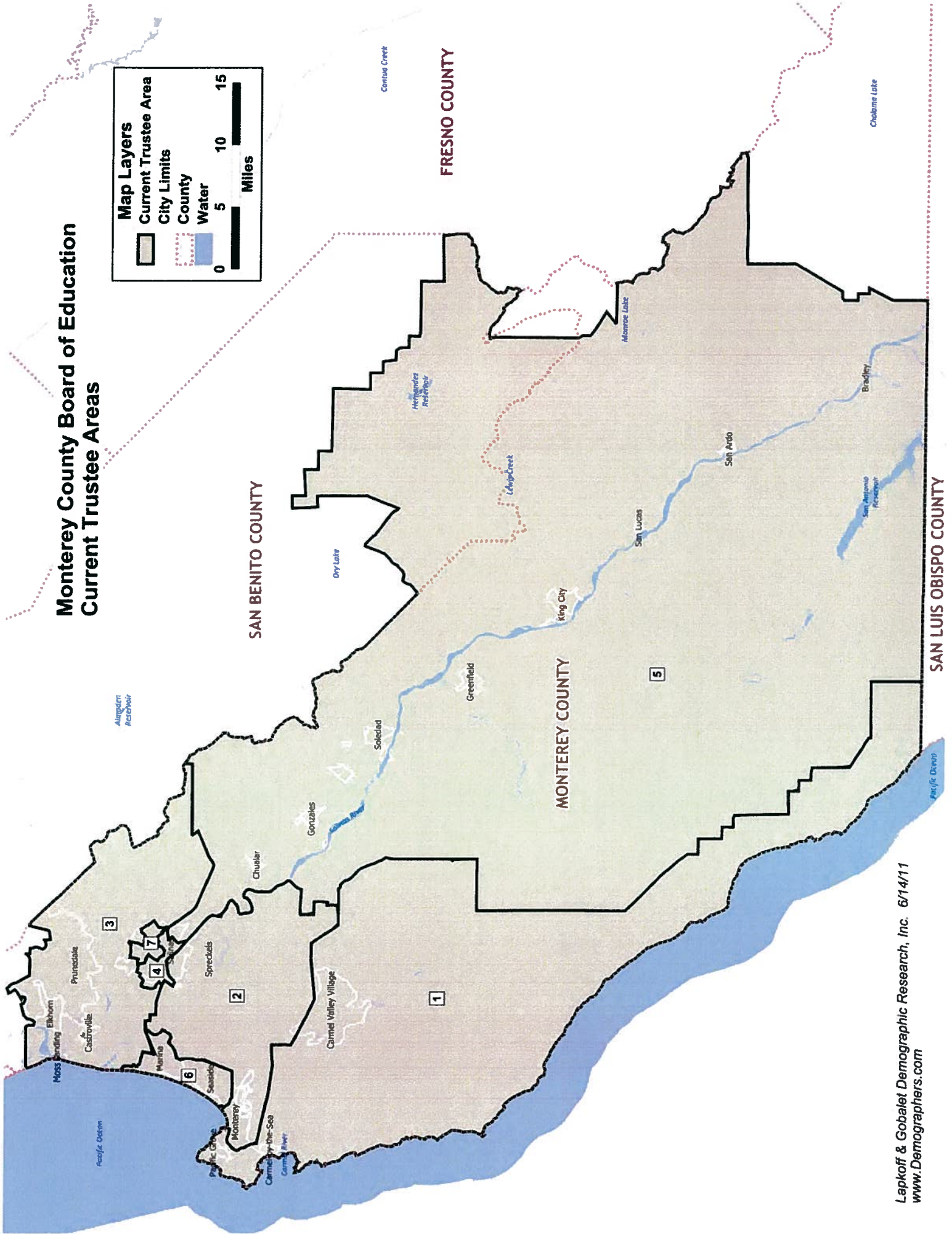
Monterey County Board of Education Current Trustee Areas

Map Layers

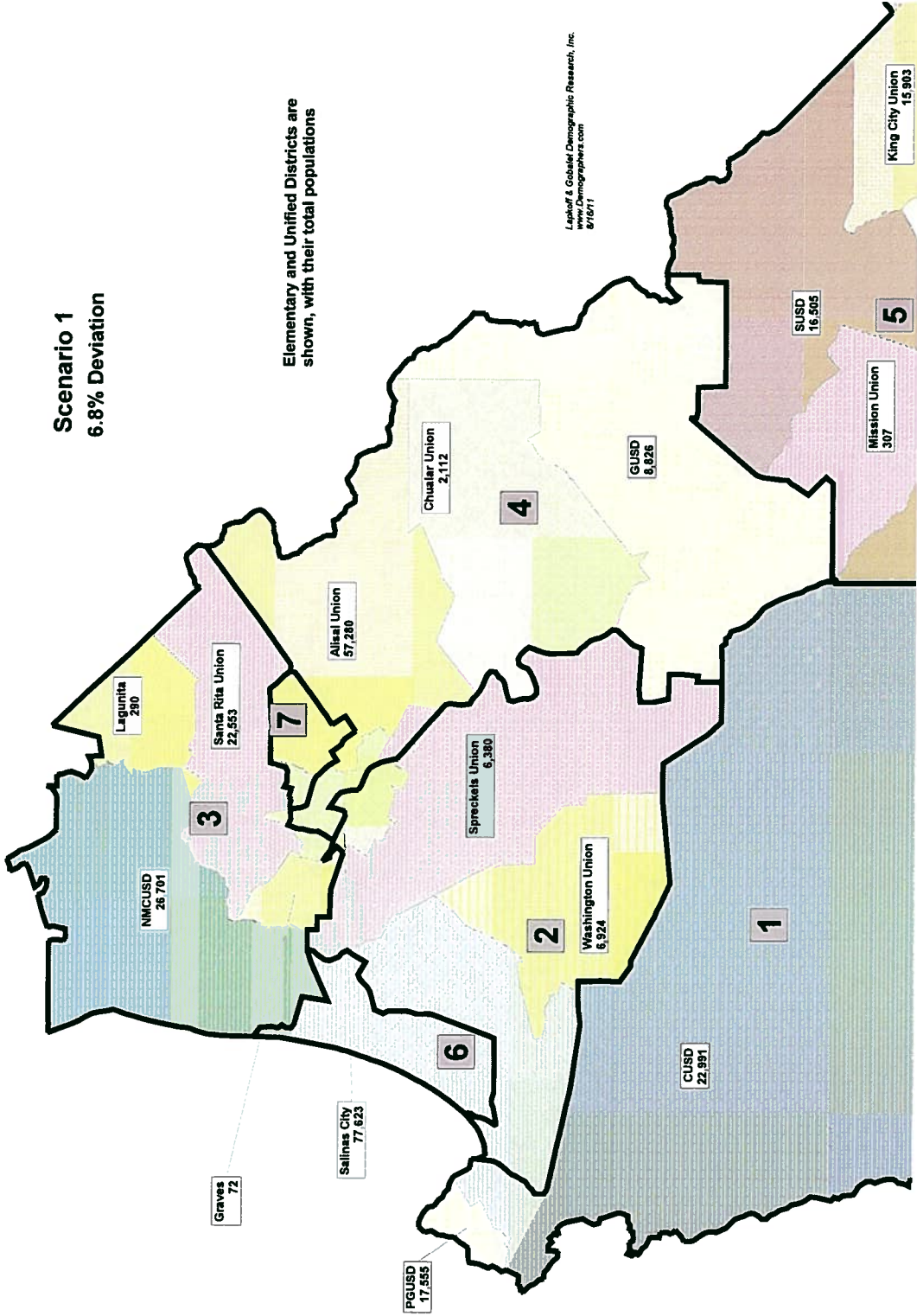
- Current Trustee Area
- City Limits
- County
- Water

Miles

0 5 10 15

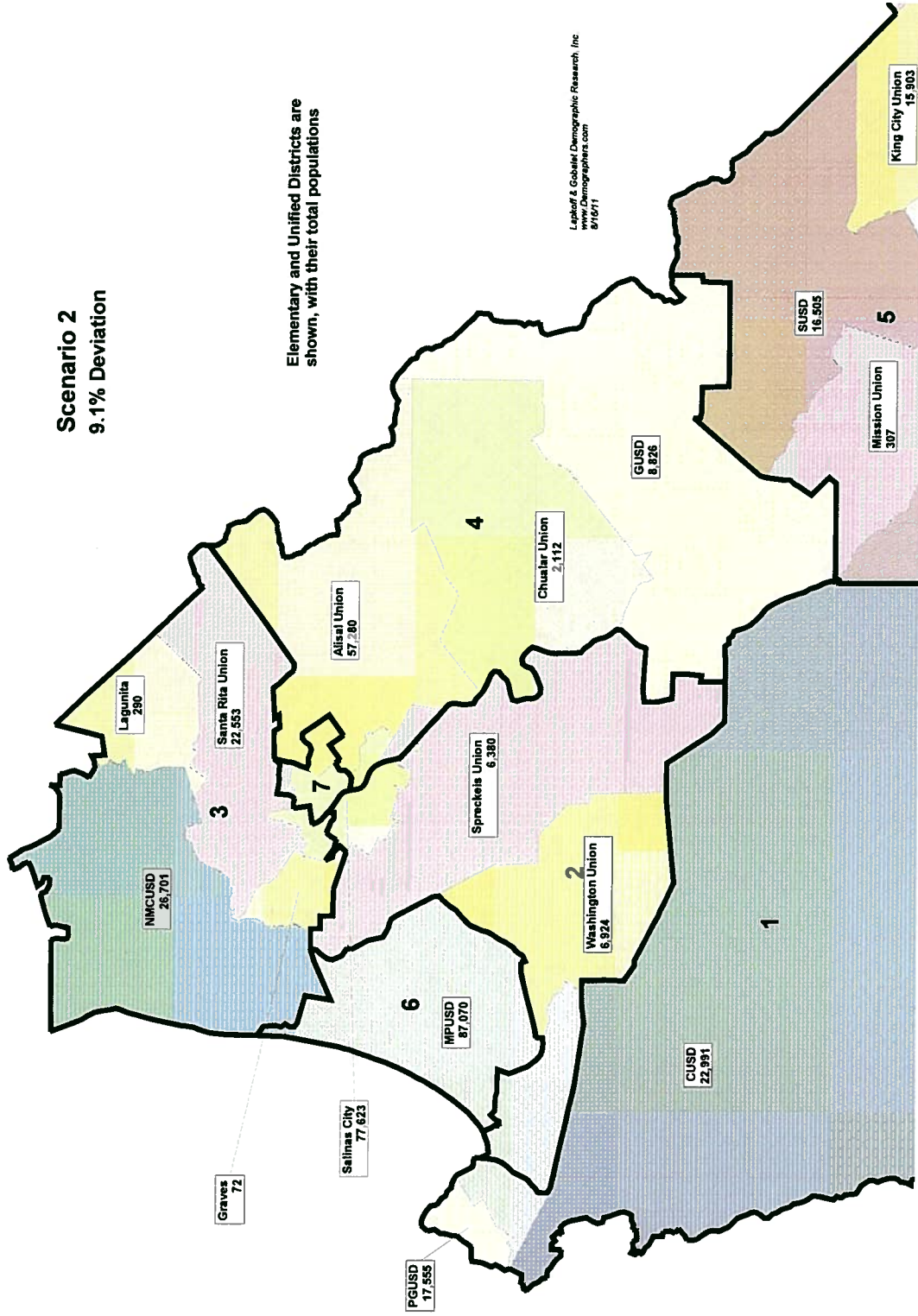


Scenario 1
6.8% Deviation



Laploff & Gobiel Demographic Research, Inc.
www.Demographers.com
870711

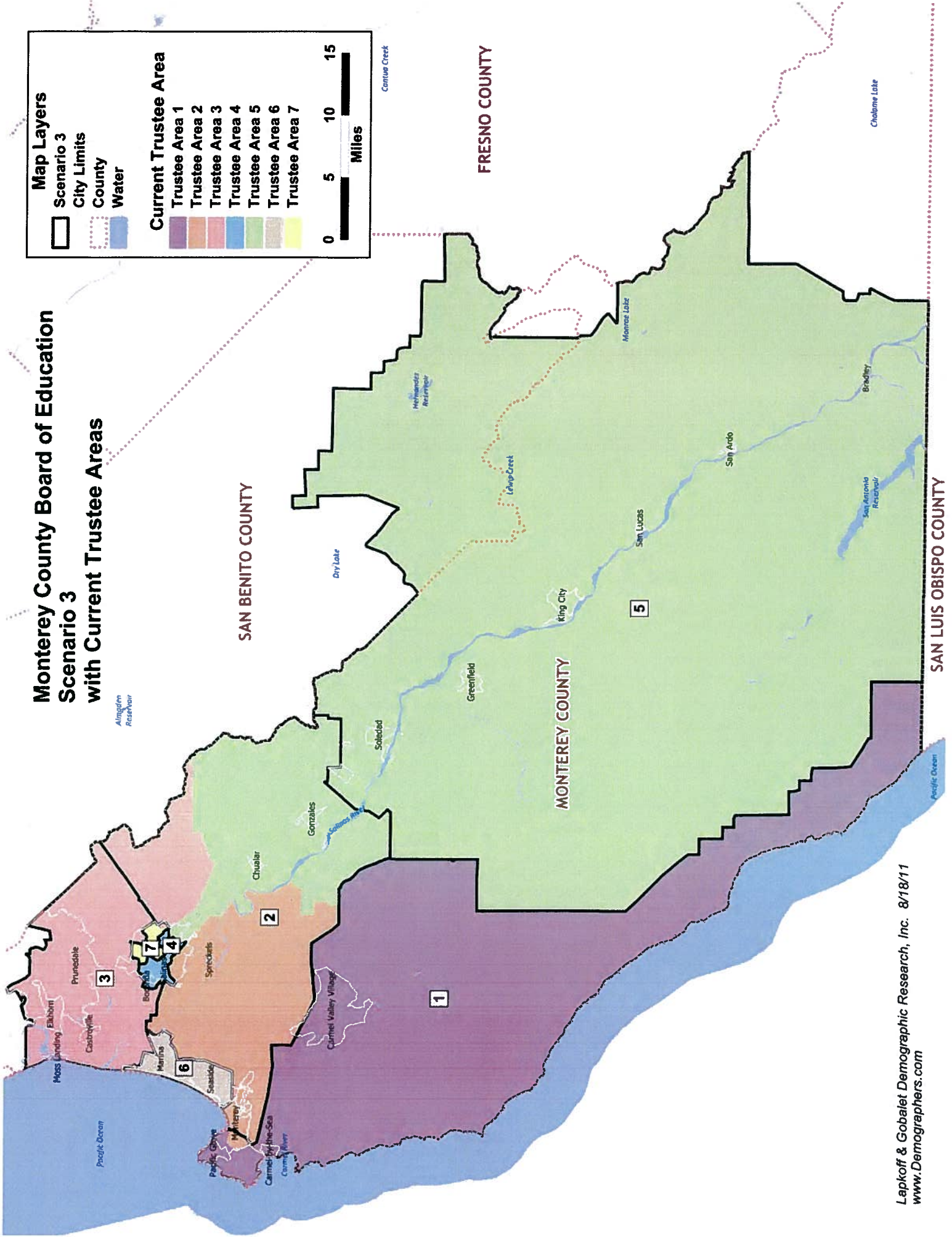
Scenario 2
9.1% Deviation



Elementary and Unified Districts are shown, with their total populations

Lapkoff & Gubelin Demographic Research, Inc
www.Demographers.com
816011

Monterey County Board of Education Scenario 3 with Current Trustee Areas



Map Layers

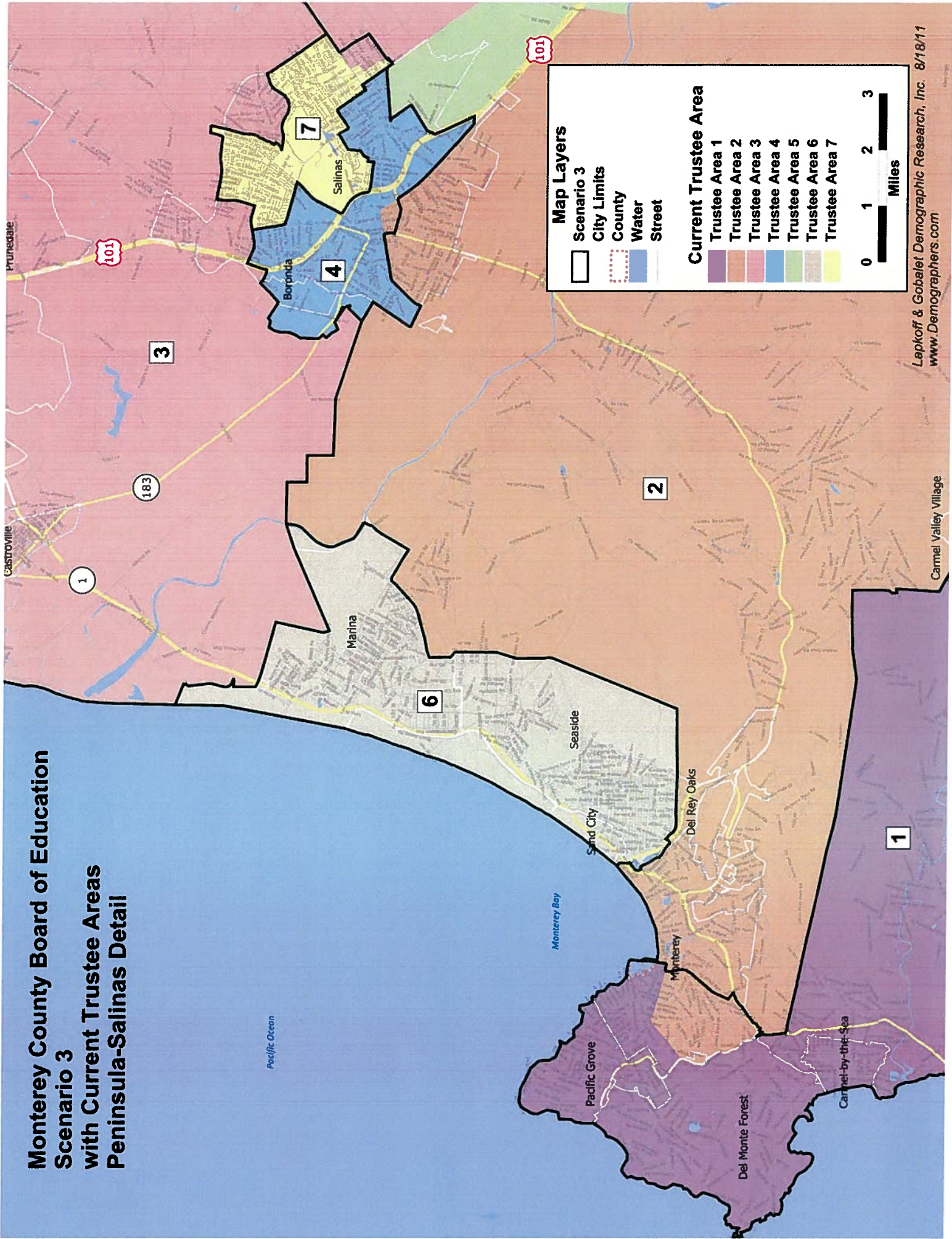
- Scenario 3
- City Limits
- County
- Water

Current Trustee Area

- Trustee Area 1
- Trustee Area 2
- Trustee Area 3
- Trustee Area 4
- Trustee Area 5
- Trustee Area 6
- Trustee Area 7



Monterey County Board of Education Scenario 3 with Current Trustee Areas Peninsula-Salinas Detail



Map Layers

- Scenario 3
- City Limits
- County
- Water
- Street

Current Trustee Area

- Trustee Area 1
- Trustee Area 2
- Trustee Area 3
- Trustee Area 4
- Trustee Area 5
- Trustee Area 6
- Trustee Area 7

0 1 2 3
Miles

**Monterey County Board of Education
Scenario 3
with Current Trustee Areas**

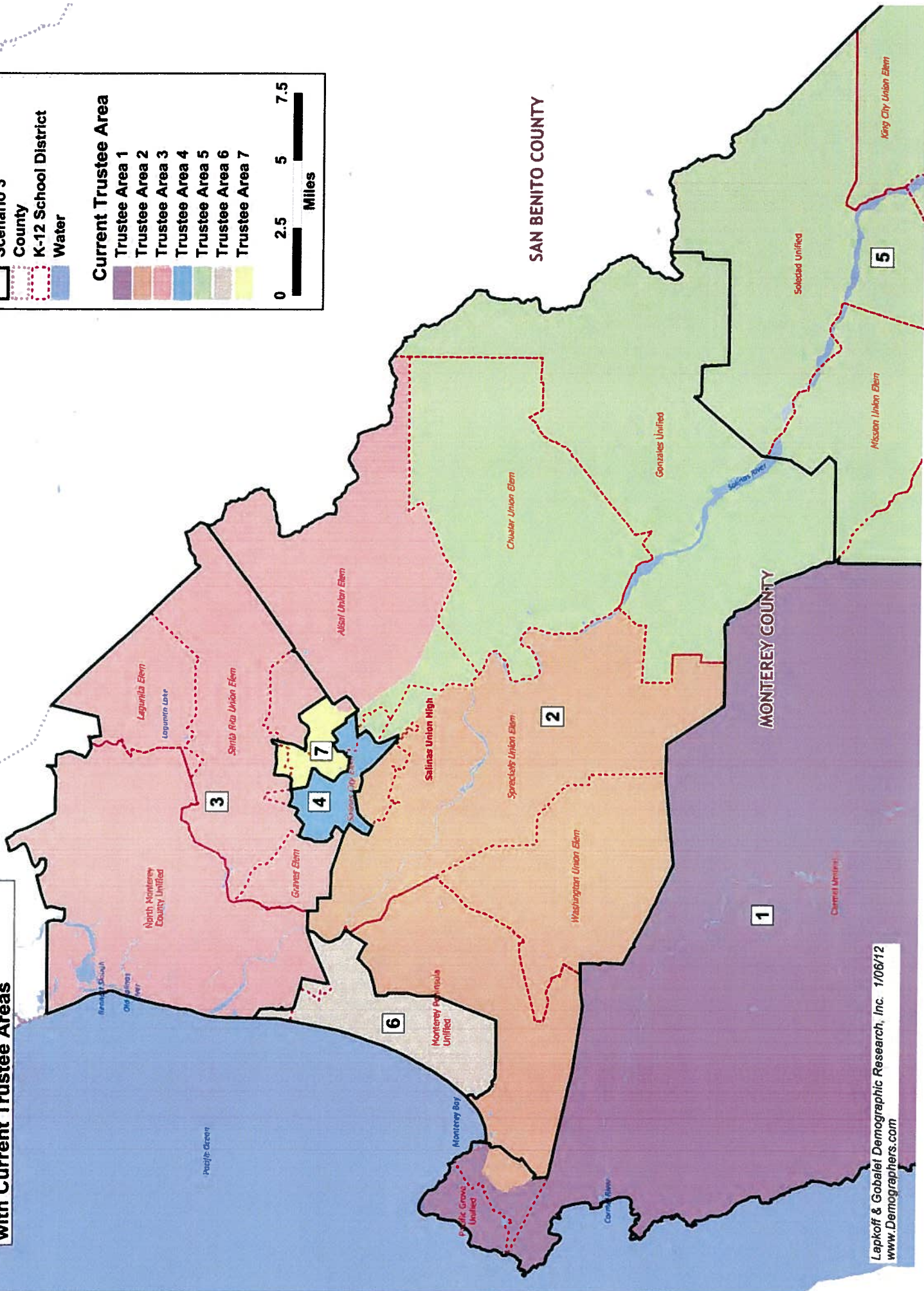
Map Layers

- Scenario 3
- County
- K-12 School District
- Water

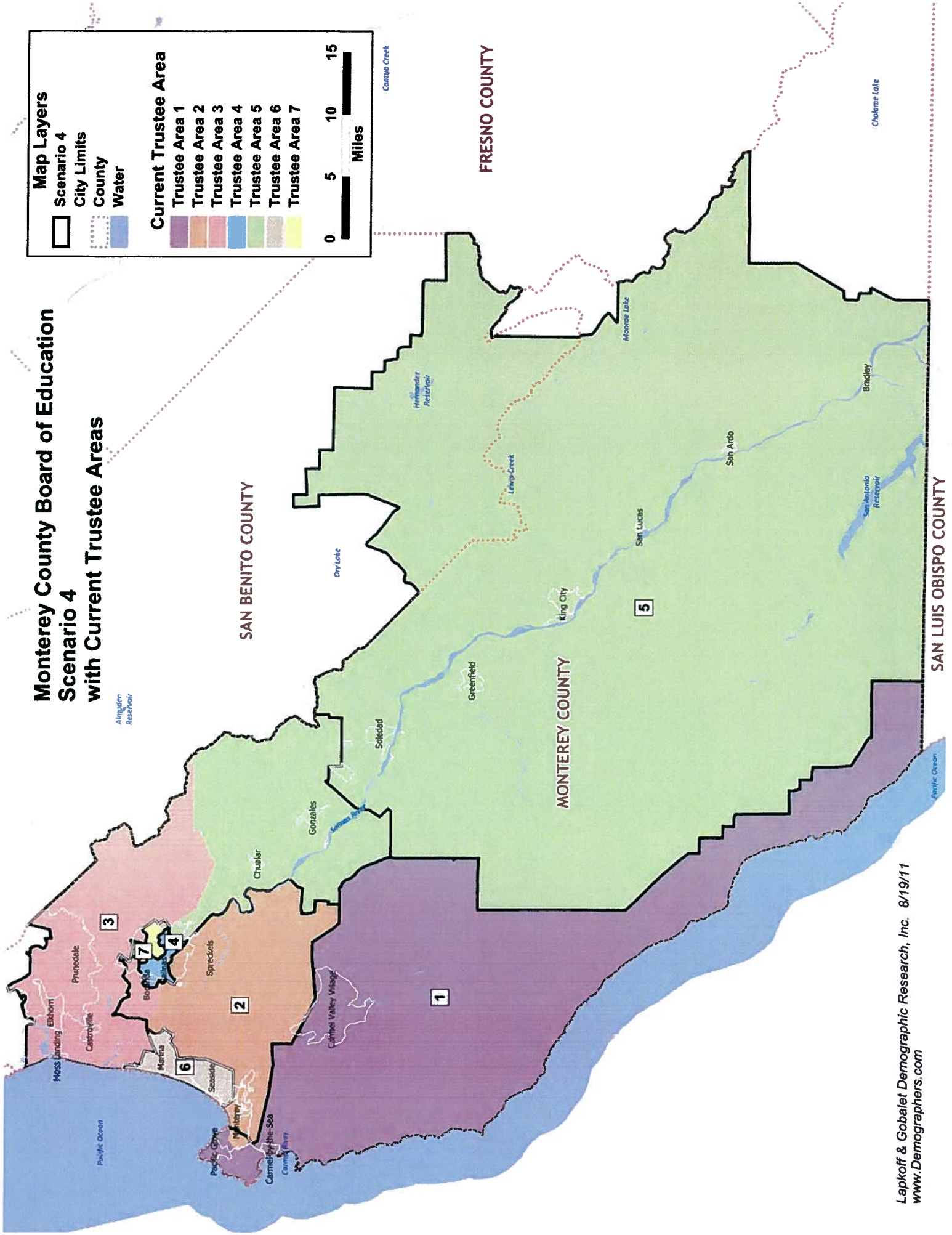
Current Trustee Area

- Trustee Area 1
- Trustee Area 2
- Trustee Area 3
- Trustee Area 4
- Trustee Area 5
- Trustee Area 6
- Trustee Area 7

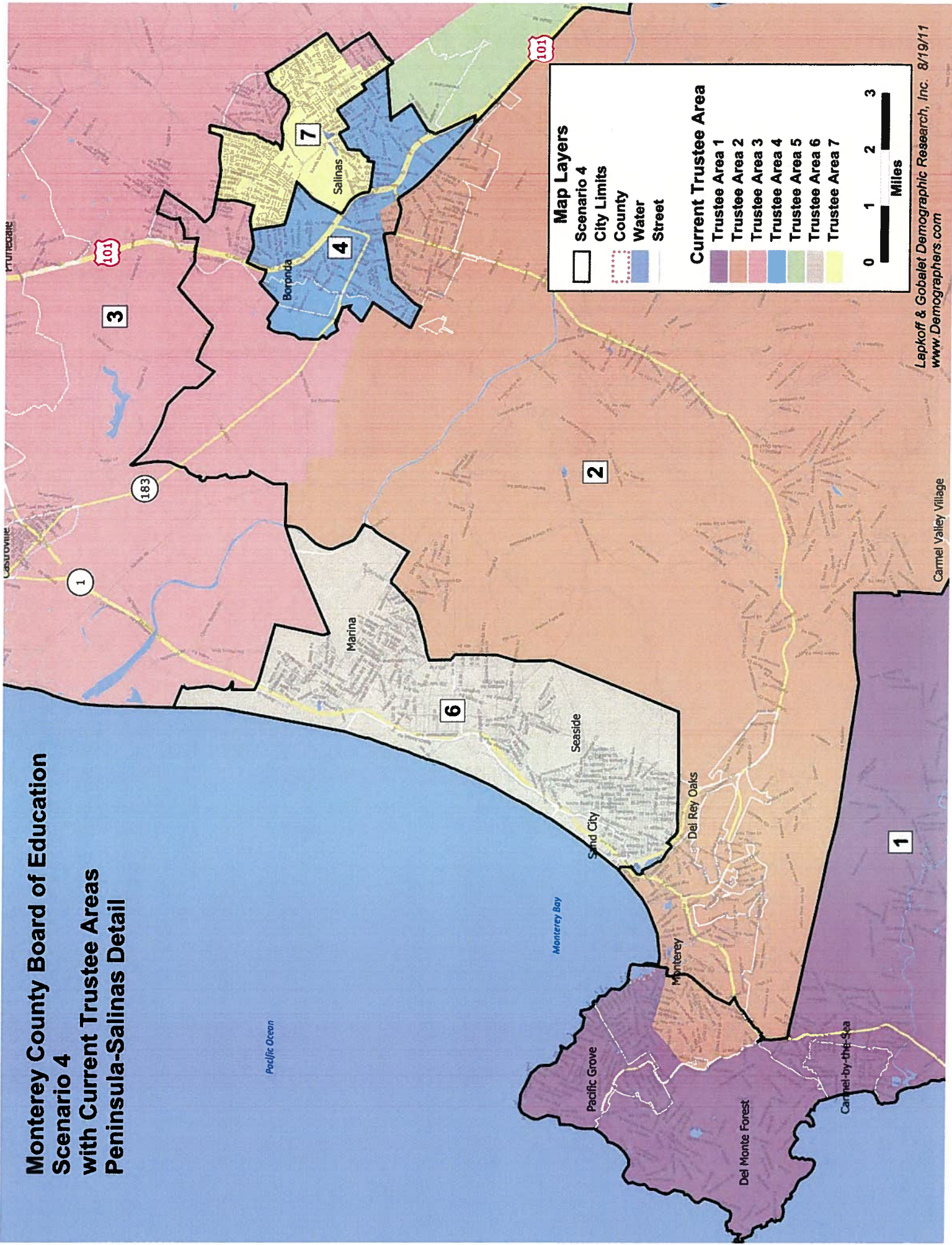
0 2.5 5 7.5 Miles



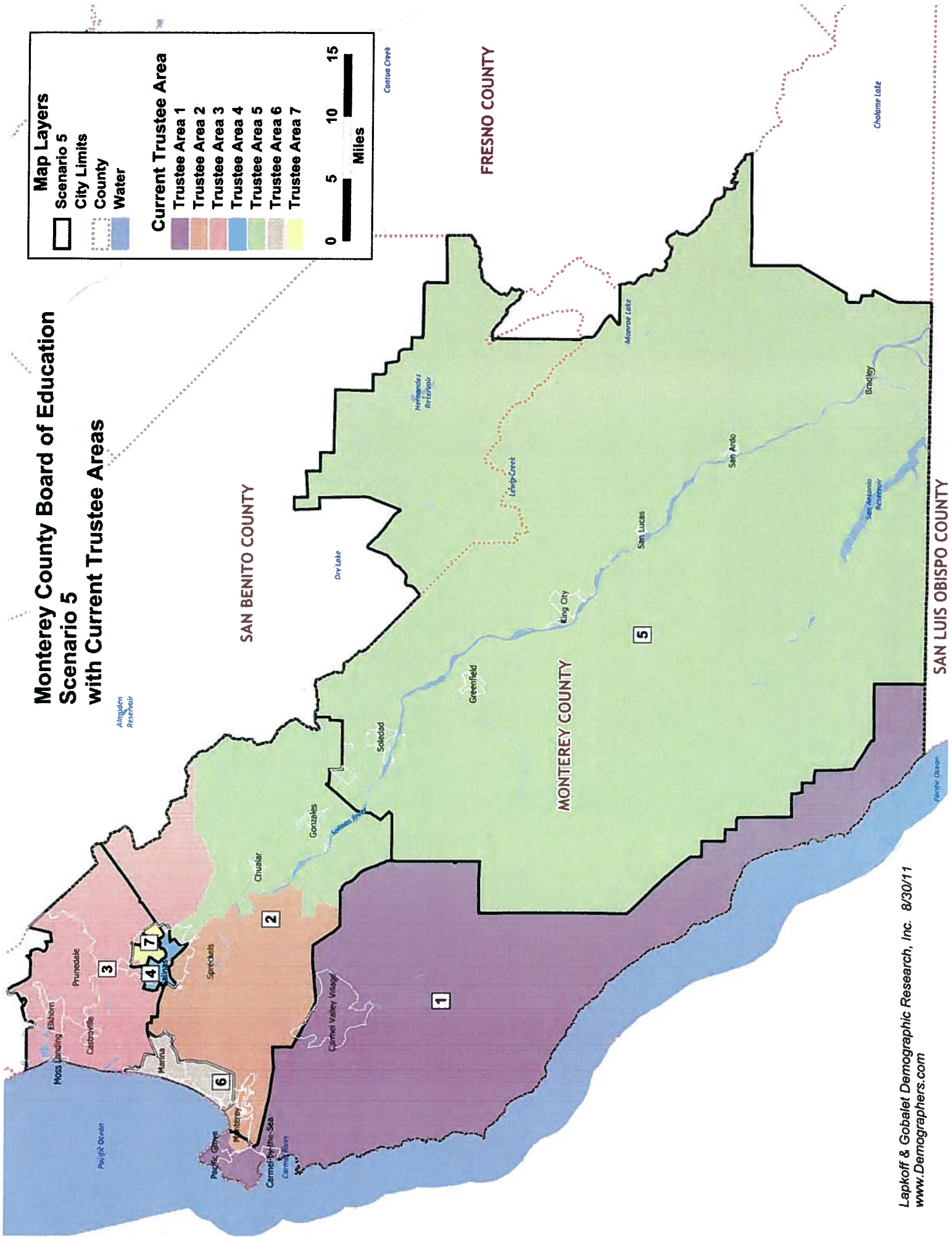
Monterey County Board of Education Scenario 4 with Current Trustee Areas



Monterey County Board of Education Scenario 4 with Current Trustee Areas Peninsula-Salinas Detail



Monterey County Board of Education Scenario 5 with Current Trustee Areas



Map Layers

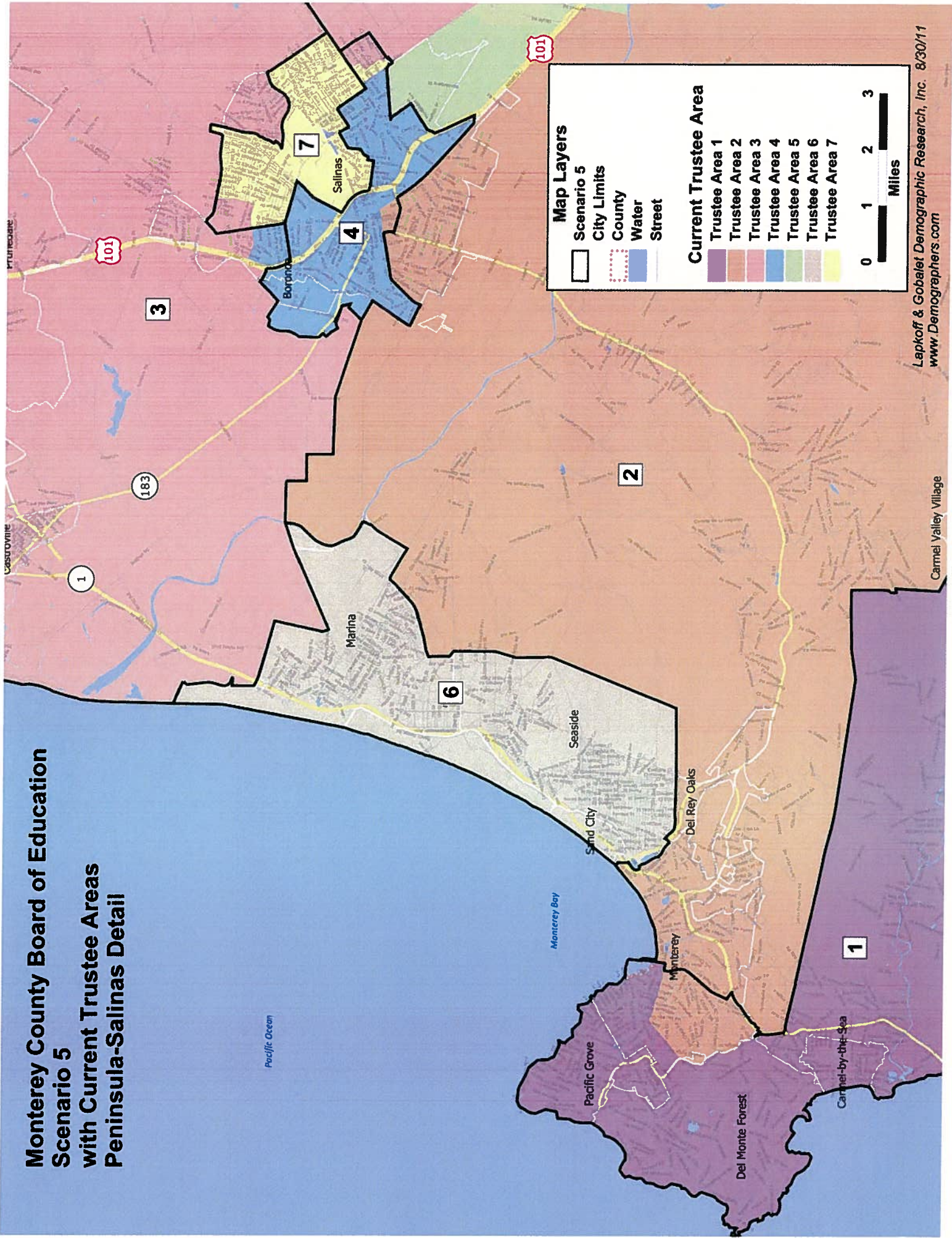
- Scenario 5
- City Limits
- County
- Water

Current Trustee Area

- Trustee Area 1
- Trustee Area 2
- Trustee Area 3
- Trustee Area 4
- Trustee Area 5
- Trustee Area 6
- Trustee Area 7

0 5 10 15
Miles

Monterey County Board of Education Scenario 5 with Current Trustee Areas Peninsula-Salinas Detail



Map Layers

- Scenario 5
- City Limits
- County
- Water
- Street

Current Trustee Area

- Trustee Area 1
- Trustee Area 2
- Trustee Area 3
- Trustee Area 4
- Trustee Area 5
- Trustee Area 6
- Trustee Area 7

0 1 2 3 Miles