

The Salinas Valley Health Pathways Partnership Program

Debra Kaczmar, Dean, Nursing & Allied Health, Hartnell College
Tim Vanoli, Superintendent,
Salinas Union High School District
Britt Rios-Ellis, CSUMB

Monterey County School Board Association

COLLEGE AND CAREER PATHWAYS, Aligning the Curriculum: K-12, Community Colleges, and Universities



February 9, 2017

Goal:

Develop high quality industry pathway programs to **graduate all students college and career ready** through cross-institutional system alignment and collaboration.



Objective:

Develop K-12 to postsecondary linkages and industry partnerships to create pathway programs that provide the rigor, relevance and relationships needed for students to make successful transitions.

COLLEGE AND CAREER READINESS

RIGOR

integrated academics
and technical course
sequences linked to
postsecondary
programs aligned with
high demand industry
sectors

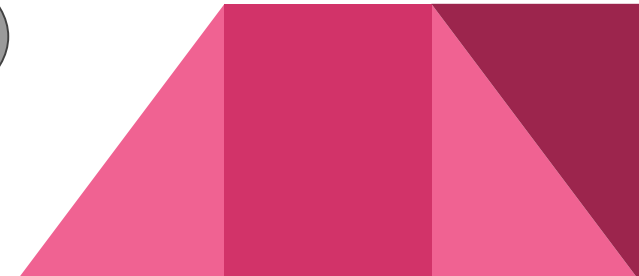
RELEVANCE

Knowledge and Skills Training
activities across the (K-14)
Continuum for applied learning
in real-world situations
and settings

RELATIONSHIPS

Guidance and counseling
support services to increase
access, remove barriers and
facilitate seamless transitions
to college and career
opportunities

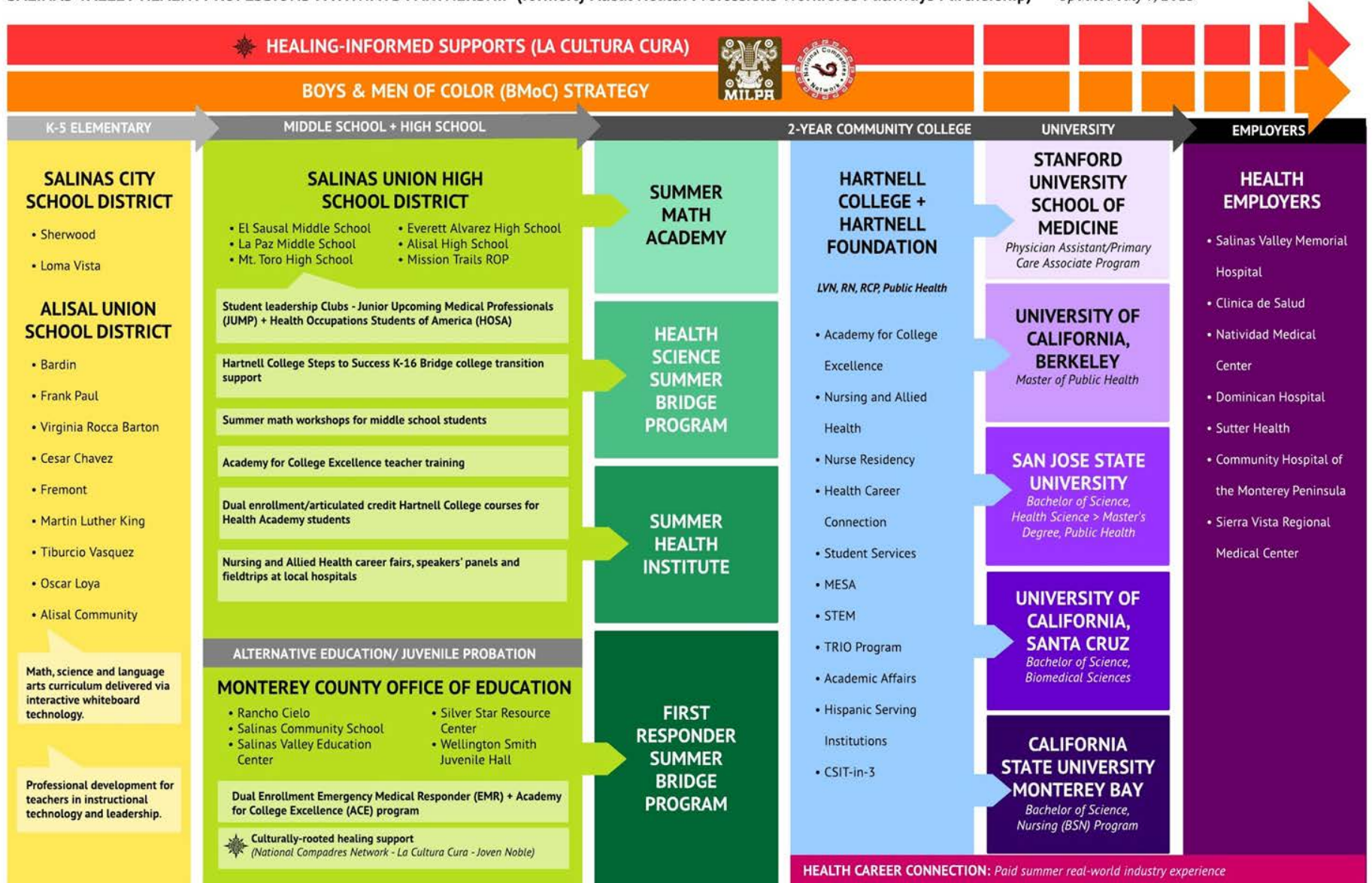
CROSS-INSTITUTIONAL
SYSTEMS ALIGNMENT



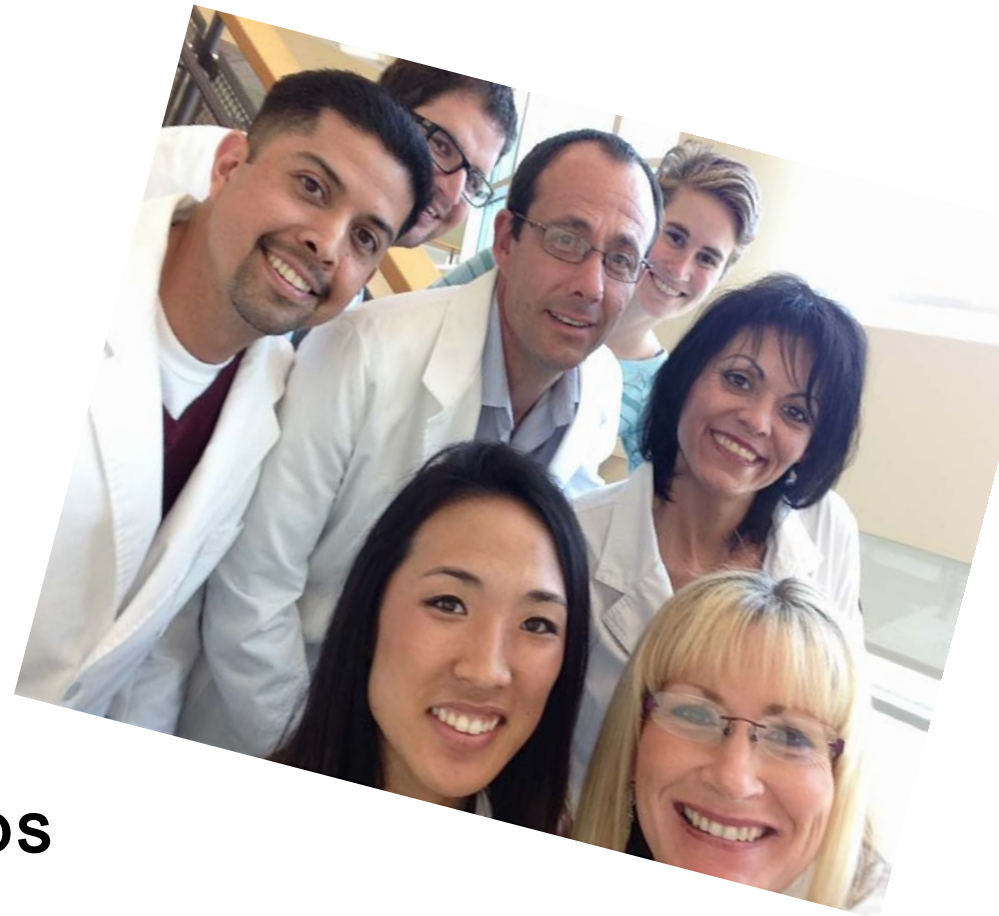


SALINAS VALLEY HEALTH PROFESSIONS PATHWAYS PARTNERSHIP (formerly Alisal Health Professions Workforce Pathways Partnership)

Updated July 7, 2015



- Registered Nursing
- Vocational Nursing
- Emergency Medical Technician
- Respiratory Care
- Public Health Science

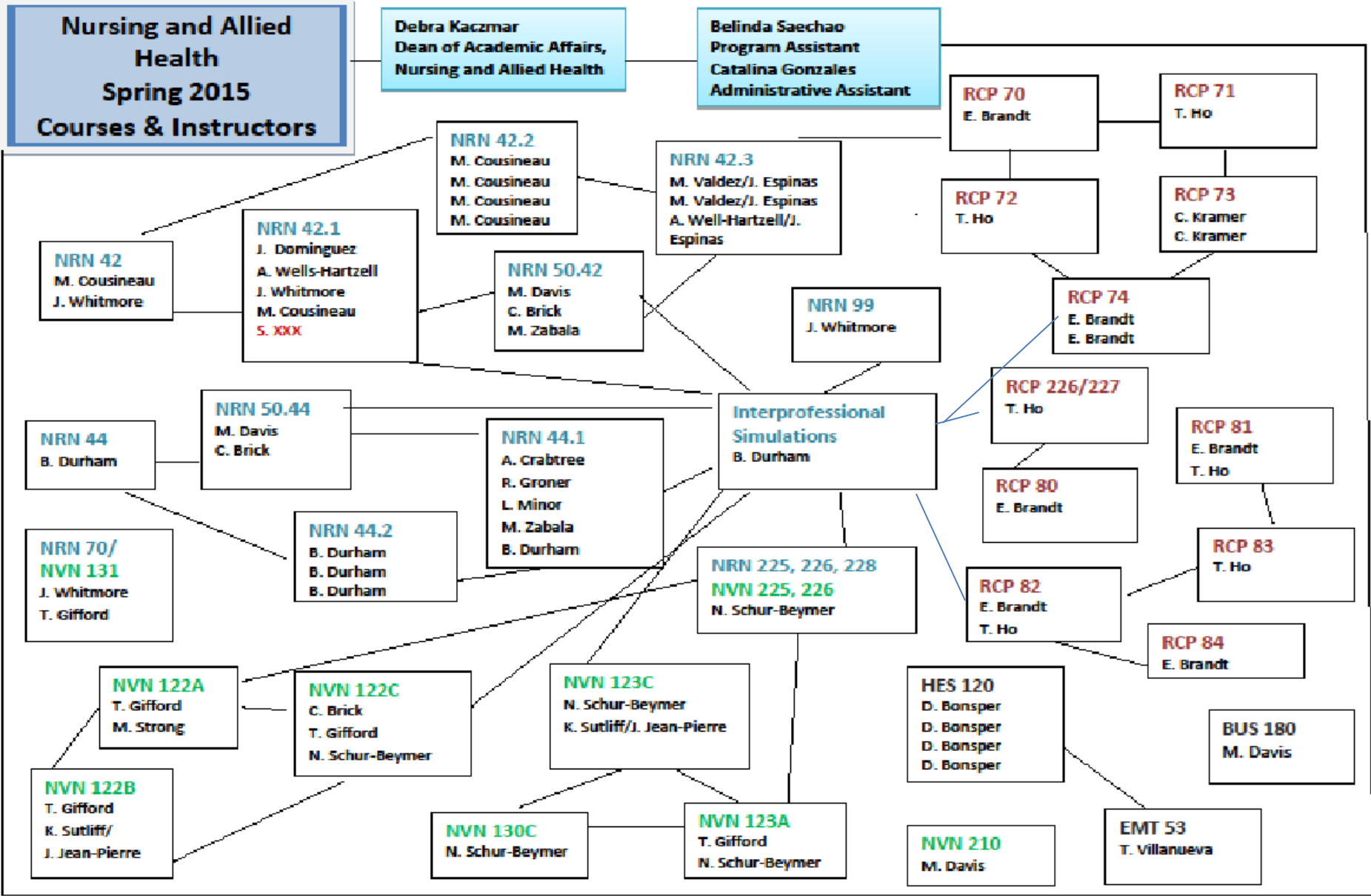


28 Community Partnerships
7 Advisory Boards

Holistic Approach
Cohorts
Service Learning
Family Involvement
Paid Peer-led Instruction
Student Success Courses
Interprofessional Education



Interprofessional Education



Applicants: 388 Placements: 84
Active: 84 ADN
25 VN
31 RCP
65 EMT



61% Other Languages
64% First to college
~20% Attrition Rate
~86% Completion Rate
171 Rely on financial aid/ scholarships
77% Underprepared: standardized exam

Licensure First Time Pass Rate %				CA Cert.
Year	RN	VN	RCP	EMT
2011	94	93	---	74
2012	97	91	---	---
2013	97	87	---	81
2014	96	84	---	76
2015	100	100	100	78
2016	94	100	100	78



Post Graduation: 2012-2016

Employment

- RNs: 100%
- VNs: 82%
- EMT or related field: 90%
- RCPs: 100%
- 82% work locally
- Residency programs: RN and RCP

Education

- 82% plan to continue their education
- 57 in CSUMB ADN-BSN Pathway



Industry Partners

Natividad Medical Center
Salinas Valley Memorial Healthcare System
Community Hospital of the Mty Peninsula
Mee Memorial Hospital
Sierra Vista Medical Center
St. Louise Regional Hospital
Sutter Medical Center
Santa Clara Valley Medical Ctr
French Hospital
Dominican Hospital
El Camino Hospital
Clinica de Salud del Valle de Salinas

Advantacare
Clinica de Salud
Coastal Kids Home Care
Dorothy's Hospitality Center
Eden Valley Care Center
Medics For Life
Monterey County Health Dept
Monterey Bay Oncology
Monterey/ Salinas VNA
Pacific Coast Care Center
Kinship Center
Sun Street Center
Salinas Valley Cancer Center

Key Educational Partners

San Jose State University
University of Santa Cruz
University of Berkeley
Stanford University
Cal State Monterey Bay
Cal State Dominguez Hills

RCP Consortium:

- **Skyline College**
- **Modesto College**

Local ADN Collaborative:

- **Hartnell College**
- **Monterey Peninsula College**
- **Gavilan College**
- **Cabrillo College**

Public Health

- **University of Berkeley**
- **Cal State Monterey Bay**



SALINAS VALLEY HEALTH PROFESSIONS PATHWAYS PARTNERSHIP (formerly Alisal Health Professions Workforce Pathways Partnership) Updated July 7, 2015

