

# Monterey County Special Education Local Plan Area

## Regional Collaboration for Student Success

---

### What is the Monterey County SELPA?

Special Education Local Plan Areas (SELPA) were created by state legislation to assist in assuring that districts and county offices of education provide a full continuum of programs and services to students with disabilities and that these programs and services are provided according to all legal mandates. Every district and county office of education belongs to a SELPA. The districts and county offices of education that belong to each SELPA are referred to as local education agencies (LEAs). Monterey County SELPA is a single-county, multiple-district SELPA. Each SELPA has an administrator and must have an assigned Administrative Unit (AU). The purpose of the AU is to provide support to the SELPA in areas such as office facilities, personnel services, and fiscal management. The AU can be assigned to any of the LEAs within the SELPA. The SELPA, however, is a separate organization from the LEA that is selected to act as the SELPA's AU. In the Monterey County SELPA, the Monterey County Office of Education has been selected as the AU. The participating LEAs of each SELPA must develop a local plan that describes how special education and related services will be provided to eligible children and youth within the SELPA.

### Members of the Monterey County SELPA

All of the school districts within Monterey County as well as the Monterey County Office of Education are members of the Monterey County SELPA. A school district or charter school that is not currently a member of the SELPA may apply to become an LEA member using a process outlined in Monterey County Procedural Handbook.

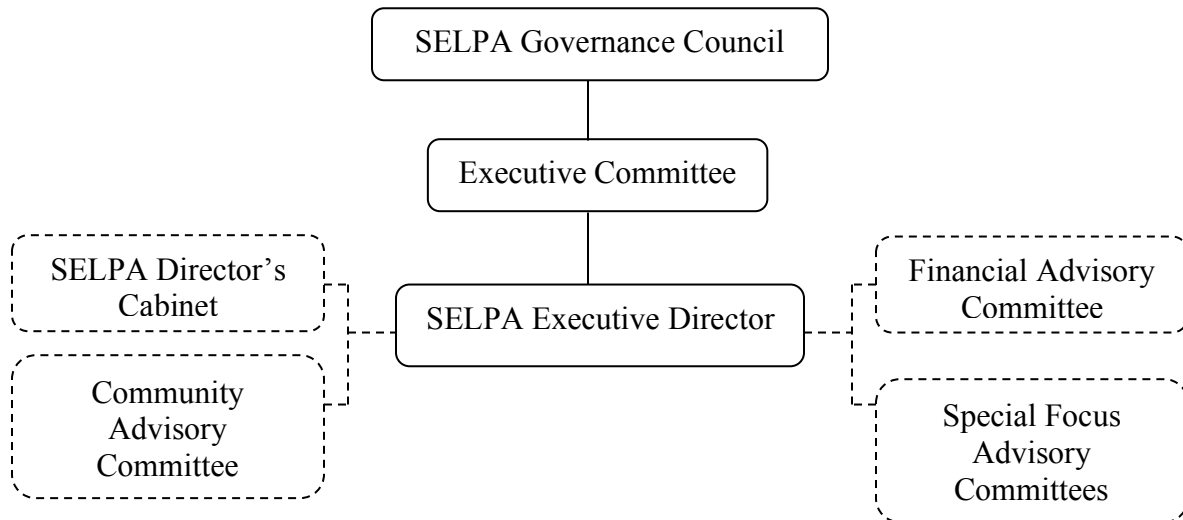
### Role of the SELPA

The Monterey County SELPA engages in a variety of support services designed to ensure that appropriate special education and related services are available to the eligible children and youth of Monterey County. These services include:

- Developing and maintaining the local plan that identifies the structures, systems, and policies, that will be used to support the LEAs in providing special education programs and services;
- Developing and maintaining policies, procedures, and inter-agency agreements necessary for implementing the local plan;
- Receiving funding from federal and state sources and distributing it to LEAs;
- Facilitating completion of program reviews and evaluations;
- Providing appropriate staff development and parent training opportunities; and
- Providing the administrators, service providers, and parents of its participating LEAs with consultation and support, as needed.

## SELPA Governance Structure

The following organization chart illustrates the SELPA governance structure:



### SELPA Governance Council

The SELPA Governance Council appoints representatives to the SELPA Executive Committee, reviews and approves the local plan and significant changes to the local plan, revisions to the funding allocation model, and any other item determined necessary by the Executive Committee. This council consists of the superintendent of each of the 24 participating districts and the Monterey County Office of Education. The SELPA Executive Director acts as an ex-officio member of the committee.

### Executive Committee

The Executive Committee makes recommendations to the Governance Council regarding each of the items listed above. Additionally, the Executive Committee reviews and approves SELPA-wide policies, procedures, and local agreements; the annual service and budget plans; requests for program transfer, and evaluates the SELPA Executive Director. The committee is made-up of two superintendents from each of three zones (Bay, Salinas, and Valley). The Superintendent of the Monterey County Office of Education serves as an advisory member. The SELPA Executive Director acts as an ex-officio member of the committee.

### SELPA Director's Cabinet

The SELPA Director's Cabinet is an advisory group convened by the SELPA Executive Director to provide input and recommendations regarding the local plan, the funding allocation model, the development of inter-agency agreements, policies, forms, and procedures. The cabinet consists of the special education administrator or other representative from each of the 24 participating districts and the Monterey County Office of Education as well as the SELPA program specialists.

### Financial Advisory Committee

The Financial Advisory Committee is an advisory committee convened by the SELPA Executive Director to provide input and recommendations regarding fiscal issues. The committee is comprised of chief business officials and special education administrators representing districts from each zone and the Monterey County Office of Education.

### Community Advisory Committee (CAC)

The CAC reviews and provides input into the development of the local plan, recommends annual priorities to be addressed by the SELPA, and assists in parent education and awareness. The CAC includes parents, students, special education and general education staff members, and community members appointed by LEA governing boards. The majority of members are parents of children with disabilities.